

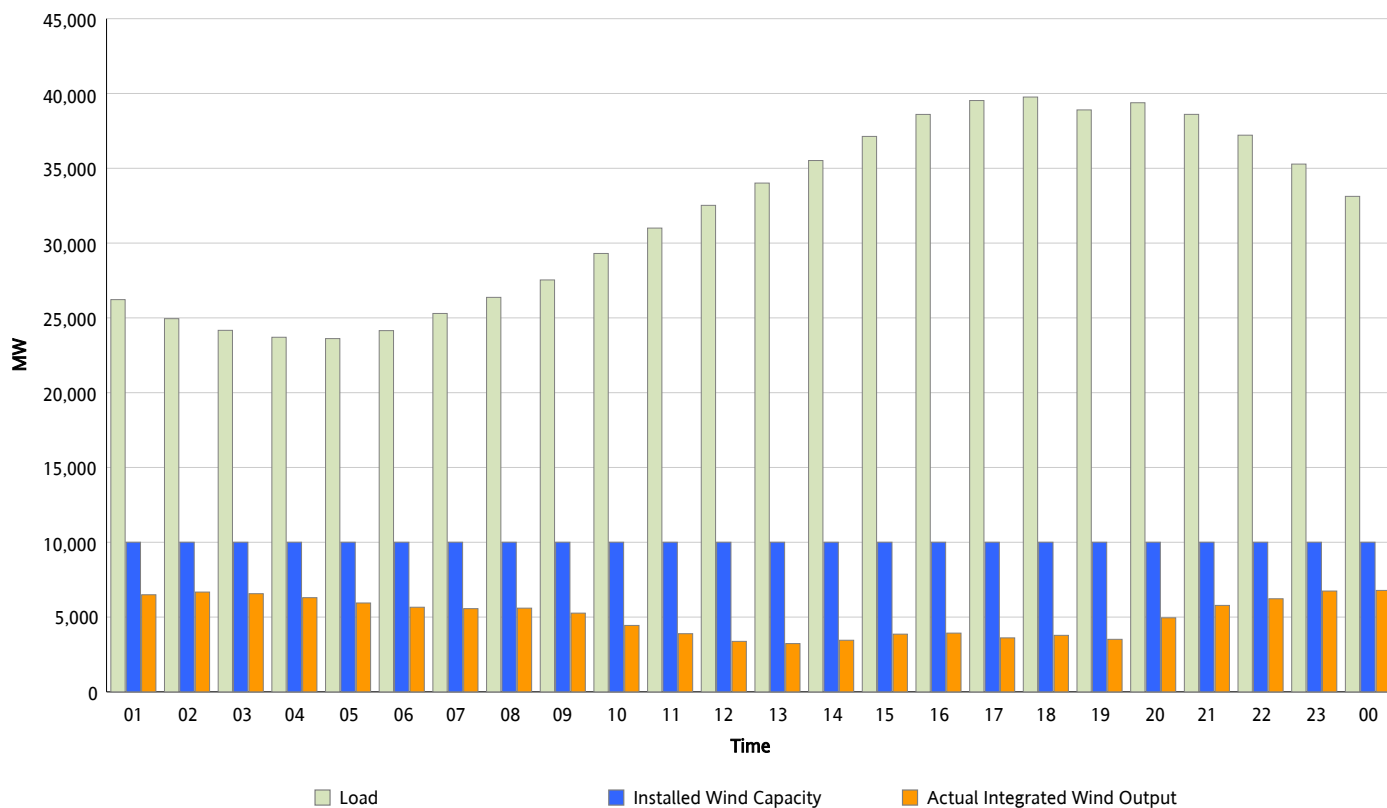


ERCOT Grid Operations

Wind Integration Report : 10/20/2012

| | |
|----------------------|-----------|
| Peak Load | 39,761 MW |
| Load Peak Hour (HE) | 18 |
| Wind Over Peak | 3,780 MW |
| Wind Record 06/19/12 | 8,368 MW |
| Max Wind Value* | 6,843 MW |
| Wind Peak Time | 23:54 |
| Wind Integration % | 21.22 % |

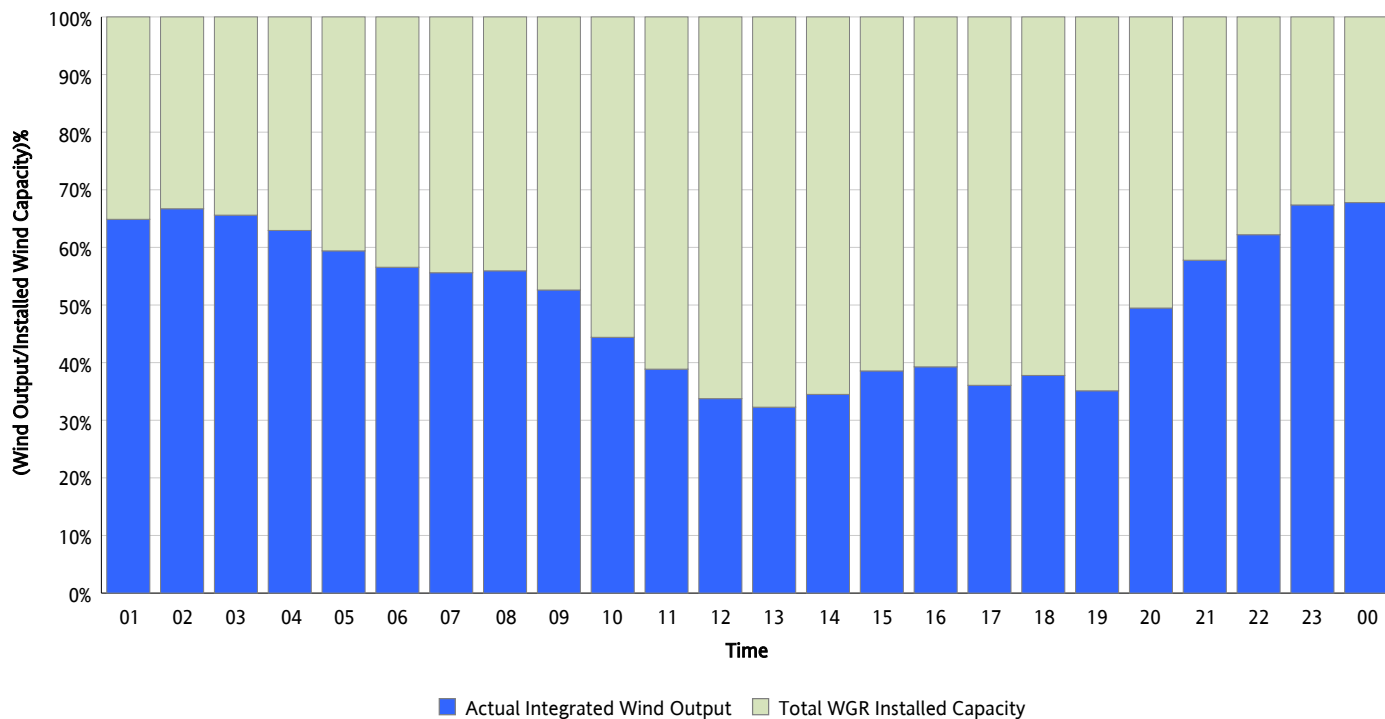
Hourly Average Actual Load vs. Actual Wind Output
10/20/2012



** Wind Record and Wind Max represent instantaneous values and the rest of the values are integrated over the hour*

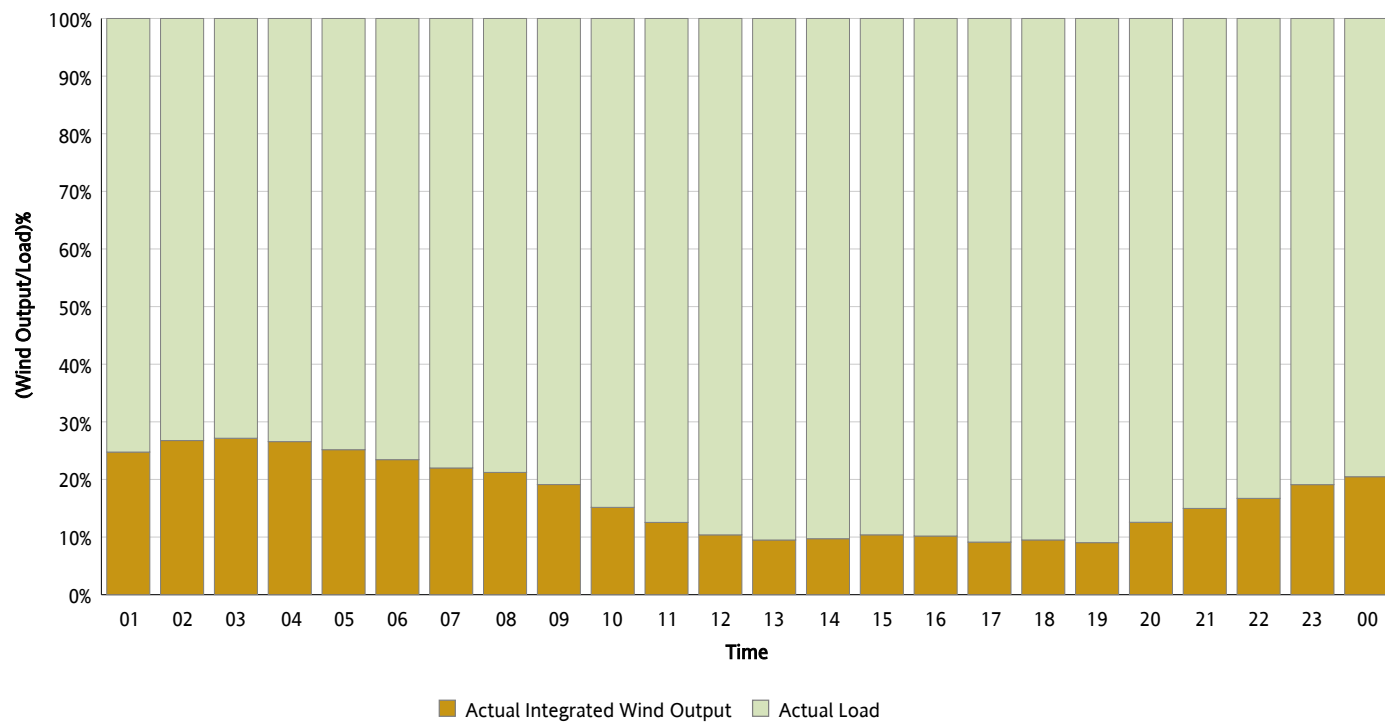
Actual Wind Output as a Percentage of the Total Installed Wind Capacity

10/20/2012



Actual Wind Output as a Percentage of the ERCOT Load

10/20/2012



ERCOT Load vs. Actual Wind Output

10/13/2012 - 10/20/2012

